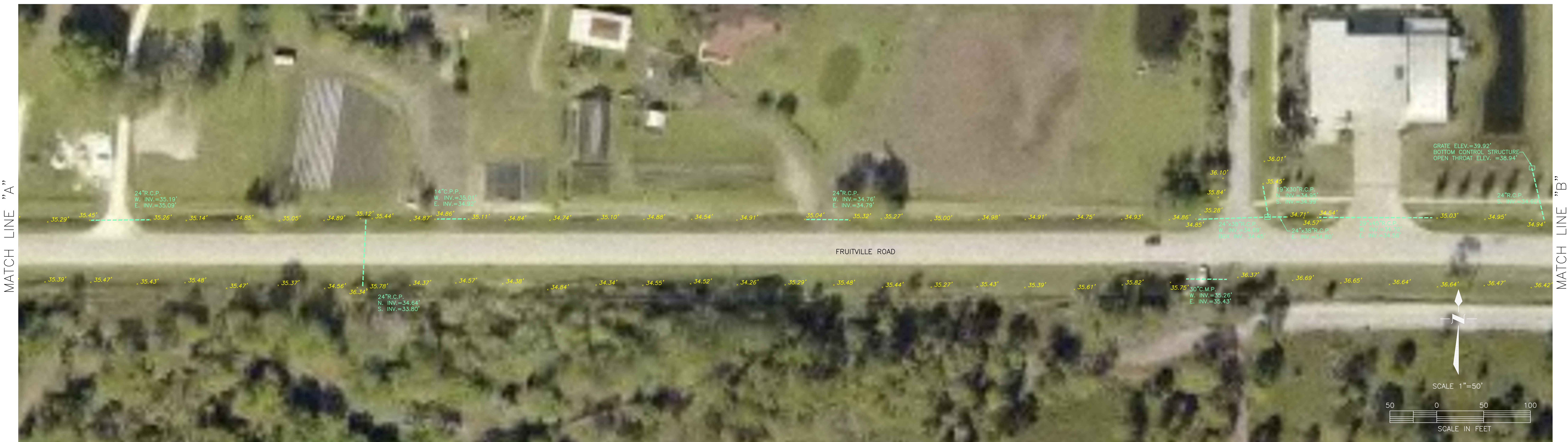


MATCH LINE "A"



MATCH LINE "A"

MATCH LINE "B"

ELEVATIONS WERE DERIVED USING LEICA GPS EQUIPMENT AND ARE BASED ON SARASOTA COUNTY CORS STATION "FRUT" (GEOID 09). NAVD83. THE ACCURACY OBTAINED IS BASED ON REDUNDANT G.P.S. RTK MEASUREMENT (MEAN POSITIONAL ERROR OF THE REDUNDANT OBSERVATION SETS FOR EACH STATION WAS FOUND TO BE +/- 0.2 FEET).

ABBREVIATION LEGEND

SYMBOL LEGEND (SYMBOLS NOT DRAWN TO SCALE)

M.E.S. = MITERED END SECTION P.B. = PLAT BOOK CONC. = CONCRETE MON. = MONUMENT R/W = RIGHT-OF-WAY FND. = FOUND (P) = PLAT (M) = MEASURED PG. = PAGE R.P.B. = ROAD PLAT BOOK O.R.B. = OFFICIAL RECORDS BOOK	C.P.P. = CORRUGATED PLASTIC PIPE P.I.D. = PROPERTY IDENTIFICATION NO. = NUMBER R.C.P. = REINFORCED CONCRETE PIPE T.O.S. = TIDE OF SLOPE T.O.B. = TOP OF BANK O.T. = OPEN THROAT FPL = FLORIDA POWER & LIGHT VER. = VERIZON CATV = CABLE TELEVISION	N&D = NAIL AND DISK I.P. = IRON PIPE I.R. = IRON ROD E.L.P. = EDGE OF PAVEMENT U.P. = UTILITY POLE DR. = DRIVE L/G. = UNDERGROUND DRAIN. = DRAINAGE TEMP. = TEMPORARY EASE. = EASEMENT R= RADIUS	⊙ = NAIL AND DISK SET ⊠ = CONCRETE MONUMENT FOUND ⊡ = IRON ROD & CAP FOUND ⊞ = IRON ROD FOUND ⊟ = IRON PIPE FOUND ⊠ = NAIL & DISK FOUND ⊞ = TEMP. BENCH MARK ⊟ = PHONE RISER	⊙ = YARD LIGHT ⊠ = STREET LIGHT ⊡ = UTILITY POLE ⊞ = LIGHT POLE ⊟ = GUY WIRE ⊠ = MANHOLE ⊞ = VALVE ⊟ = PULL BOX ⊡ = FIRE HYDRANT	⊙ = SIGN ⊠ = MAILBOX ⊡ = METER ⊞ = CLEANOUT ⊟ = SPRINKLER HEAD ⊠ = VALVE ⊞ = PULL BOX ⊟ = BACKFLOW	⊙ = BUSH ⊠ = PINE TREE ⊡ = TREE (UNKNOWN) ⊞ = OAK TREE ⊟ = PALM TREE ⊠ = FRUIT TREE ⊞ = ELEC. SERVICE BOX
--	---	--	---	--	---	---

SARASOTA COUNTY SURVEY-MAPPING
GENERAL SERVICES, REAL ESTATE SERVICES
1001 SARASOTA CENTER BLVD., SARASOTA, FLORIDA 34240
941/861-6709 • 941/861-6053 • FAX 941/861-6431

WORKSHEET
FRUITVILLE ROAD
SINCLAIR DRIVE TO
COWPEN LANE

PROJ. NO.: 16066	DWG DATE: 12-1-16	SHEET NO. 1
SEC:	TWP: RING:	FIELD DATE: 11-30-16
FIELD BOOK PG.	DRAWN BY: T.S.O.	2
I:\SURVEY\FRUIT DRAINAGE\FRUIT DRAIN.DWG		CHECKED BY: C.H.