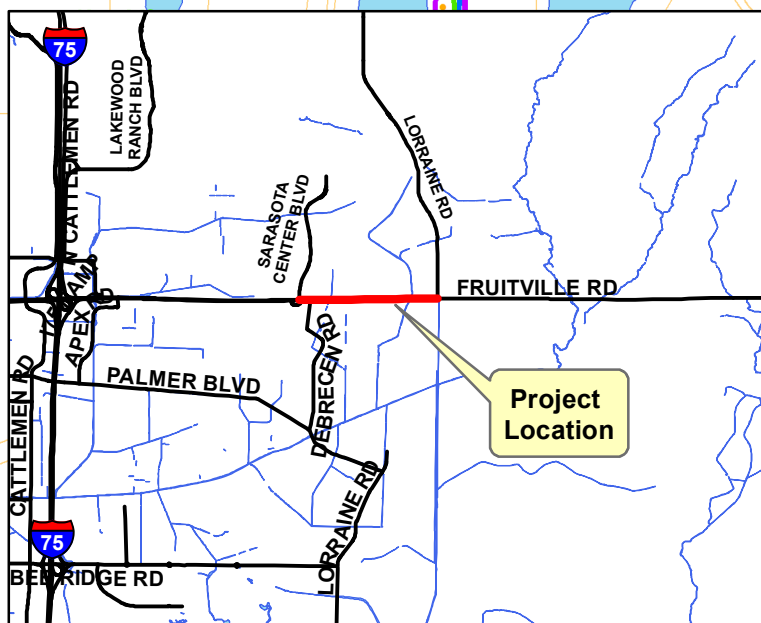
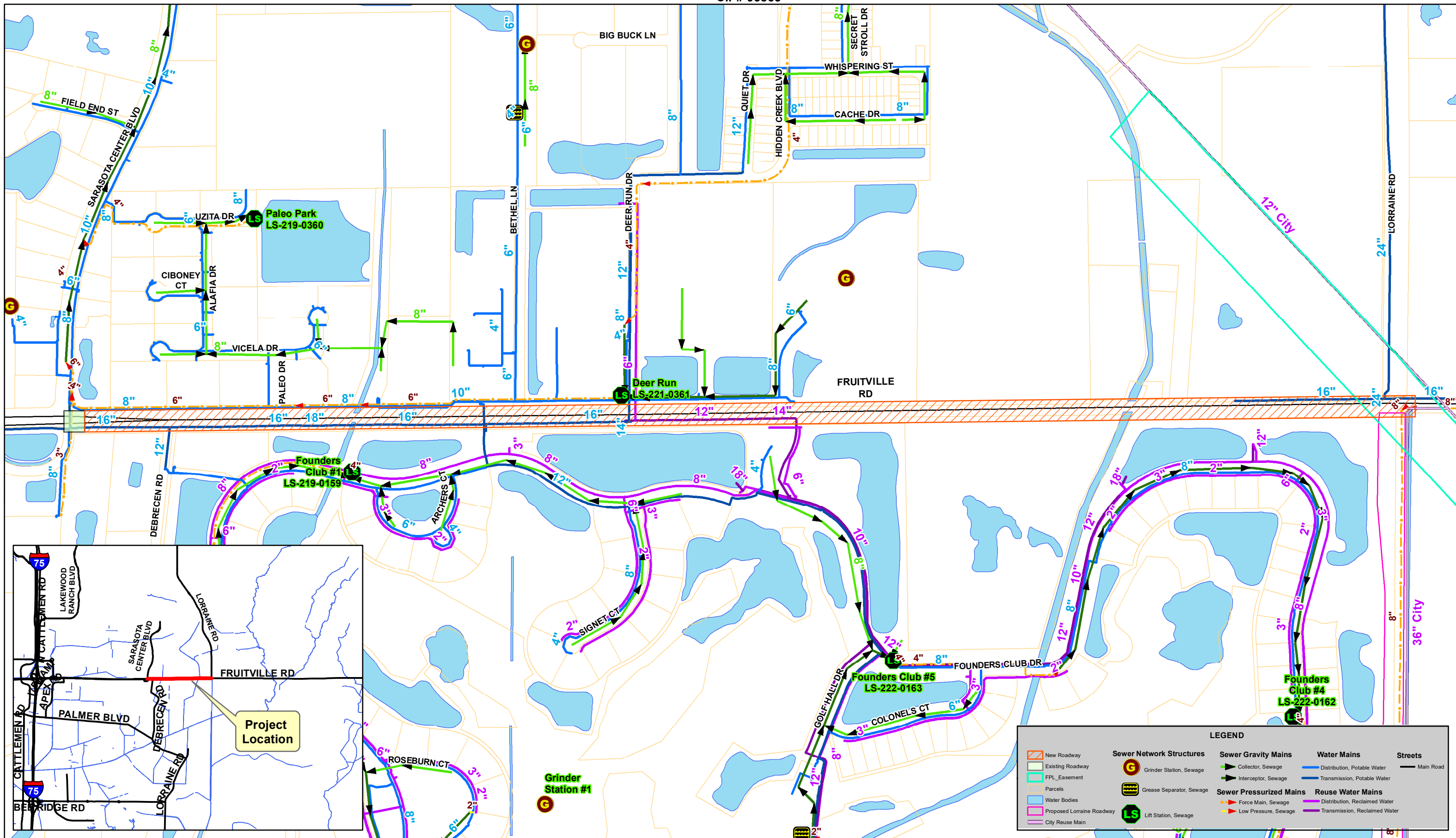
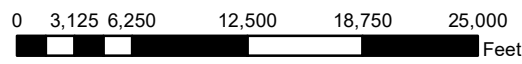


Fruitville Road Widening Existing Utilities

CIP# 95853



LEGEND	
	Sewer Network Structures
	Grinder Station, Sewage
	Grease Separator, Sewage
	Lift Station, Sewage
	Sewer Gravity Mains
	Collector, Sewage
	Interceptor, Sewage
	Water Mains
	Distribution, Potable Water
	Transmission, Potable Water
	Sewer Pressurized Mains
	Force Main, Sewage
	Low Pressure, Sewage
	Reuse Water Mains
	Distribution, Reclaimed Water
	Transmission, Reclaimed Water
	Streets
	Main Road



Map published using ArcGIS 10.x by cfragome on Wednesday, August 12, 2020

This map is produced from Sarasota County GIS, and is representative information only. The County does not warranty, guarantee, or assume any responsibility for geographic information completeness and/or accuracy. This map should not be used as guide for navigation. Copyright © SCGIS 2020

Path: N:\Environmental\CIP\95853 - Fruitville Road Widening\FruitvilleRdWidening_95853_Utlis.mxd