

Keep the Country...Country Rural Heritage not Urban Sprawl

Workshop
May 13 at 7:00 PM
Old Miakka United Methodist Church
1620 Myakka Rd
Sarasota, FL 34240

To meet the goal of keeping the NE corner of Sarasota County rural, the Miakka Community Club has initiated a Comprehensive Plan Amendment to the 2050 Plan. To get updates on what is going on, sign up by sending an email to: miakka1945@gmail.com.

The process for this publicly initiated Comprehensive Plan Amendment (CPA) application involves the following steps:

1. County staff shall clearly define the CPA and identify pertinent issues inclusive of estimated levels of staff time required to research said issues (proceeding);
2. A public workshop on the scope of the proposed amendment must be conducted by County staff (advertised following the “Neighborhood Workshop” requirements);
3. A public workshop on the scope of the proposed amendment must be conducted by the Planning Commission (advertised following the “Public Hearing” requirements);
4. The Planning Commission recommendation to proceed or not with the CPA shall then be heard by the Board;
5. The Board shall make the decision to proceed or not with the CPA as scoped, or to proceed with a modified scope for the CPA.
6. In the event that the Board decides not to proceed with the CPA, processing of the application would stop; and
7. In the event that the Board decides to proceed with the CPA as scoped, or a modified CPA scope, processing of the application would then proceed through the full CPA process.

TIPS FOR EMAILING OR CALLING COMMISSIONERS

1. In the SUBJECT line of your email always use “Keep the Country...Country. Rural Heritage not Urban Sprawl.
2. Use the term “Urban Sprawl” in place of the “Hamlet” when emailing or talking.
3. Use “Stormwater Ponds” instead of “Open Space” when discussing the requested change.
4. The requested change is TO: Rural Heritage FROM: Hamlet (I only use hamlet in this one instance because that is how it is labeled on the map.).
5. Include in ALL communications that you are a voter (I hope you are registered) and give your zip code. (You may add your address if you like. Keep in mind these are PUBLIC records.)
6. Ask **everyone** you know to email or call the Commissioners. We have to have the support from everywhere throughout the County. Ask organizations you are affiliated with to adopt a resolution of support as well as the individual members’ support.

RURAL HERITAGE NOT URBAN SPRAWL

CONTACT INFORMATION: planner@scgov.net Planning and Development Services

PLANNING COMMISSION

Current Members – 1 Vacancy

Laura Benson

Email: Laura.Benson@sarasotaadvisory.net

Kevin Cooper

Email: Kevin.Cooper@sarasotaadvisory.net

Ron Cutsinger

Email: Ron.Cutsinger@sarasotaadvisory.net

Kathie Ebaugh

Email: Kathie.Ebaugh@sarasotaadvisory.net

Category: School Board Rep. (non-voting)

Teresa Mast

Email: Teresa.Mast@sarasotaadvisory.net

Robert Morris

Email: Robert.Morris@sarasotaadvisory.net

Colin Pember

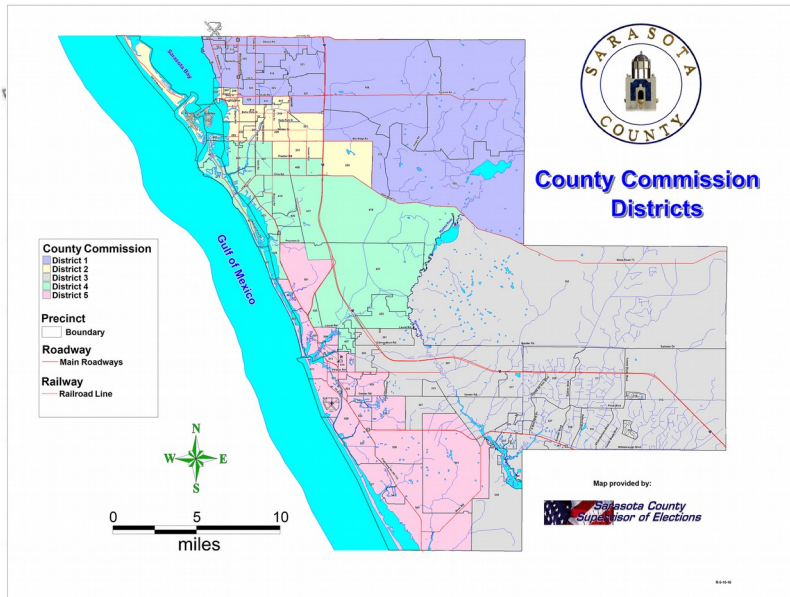
Email: Colin.Pember@sarasotaadvisory.net

Frank Strelec

Email: Frank.Strelec@sarasotaadvisory.net

T. Andrew Stultz

Email: Andrew.Stultz@sarasotaadvisory.net



BOARD OF COUNTY COMMISSIONERS:

OUR DISTRICT Mike Moran District 1 mmoran@scgov.net

Nancy Detert

District 3 ncdetert@scgov.net

Charles Hines

District 5 chines@scgov.net

Christian Ziegler

District 2 cziegler@scgov.net

Alan Maio

District 4 amaio@scgov.net

PHONE NUMBER 941-861-5000

This is the switchboard, ask for the Commissioner (each one) with whom you want to speak.

MESSAGE: SUPPORT Application CPA-2019-C filed with Sarasota County by the Miakka Community Club for a publicly initiated change to the FLUM series involving +/- 6000 acres at the NEC of Fruitville Road and Verna Road. The request is to change the designation on the subject lands from Village/Open Space Resource Management Area (V/OS-RMA) (purple) to (yellow) Rural Heritage/Estate Resource Management Area (RH/E-RMA) under the optional 2050 plan policies.

BE SURE TO SAY I AM A REGISTERED VOTER AND GIVE YOUR ZIP CODE.

This will be an ongoing effort! This is our chance to let the County Commissioners how we feel. Take advantage of this opportunity.

You will find the paper work filed with the County for the requested change to Rural Heritage from “Urban Sprawl” on the following web page (www.berncreek.net/Country.html). It is the first item in the box Comp Plan Amendment. Use any of the information in the request, add your own or both. At this point, you may simply ask to have the Proposed Map Change to Rural Heritage from Urban Sprawl.